

# THREAD-ROLLING

## & THREAD-FORMING SCREWS

- Plastite® 48-2 Alternatives
- Taptite®-II Alternatives
- EJOT® Type-PT®-Alternatives
- Metric DIN 7500 Varieties

**OVER  
3,000  
ITEMS**



# INCH SIZES



## TRILOBULAR TAPTITE®-II ALTERNATIVE STAINLESS & WAXED

- Flat Phillips (410)
- Flat Phillips Undercut (410)
- Flat Phillips (18-8)
- Flat Phillips Undercut (18-8)
- Pan Phillips (410)
- Pan Phillips (18-8)
- Truss Phillips (18-8)
- Truss Phillips (410)
- Hex Washer Slotted (410)
- Hex Washer Slotted (18-8)
- Hex Washer Unslotted (410)
- Hex Washer Unslotted (18-8)
- Flat Six-Lobe (18-8)
- Flat Six-Lobe Undercut (18-8)
- Pan Six-Lobe (18-8)
- Pan Six-Lobe (410)



## TRILOBULAR PLASTITE® 48-2 ALTERNATIVE STAINLESS & WAXED

- Flat Phillips (410)
- Flat Phillips (18-8)
- Flat Phillips Undercut (18-8)
- Pan Phillips (410)
- Pan Phillips (Black Oxide Over 18-8)
- Pan Phillips (18-8)
- Truss Phillips (18-8)
- Flat Six-Lobe (18-8)
- Flat Six-Lobe Undercut (18-8)
- Pan Six-Lobe (410)
- Pan Six-Lobe (18-8)
- Pan Six-Lobe (Black Oxide Over 18-8)
- Hex Washer Unslotted (18-8)



## TRILOBULAR PLASTITE® 48-2 ALTERNATIVE STAINLESS BLACK OXIDE & WAXED

- Pan Phillips (18-8)
- Pan Six-Lobe (18-8)



## TRILOBULAR TAPTITE®-II ALTERNATIVE STEEL BLACK OXIDE & WAXED

- Flat Phillips
- Flat Phillips Undercut
- Pan Phillips
- Hex Washer Slotted
- Hex Washer Unslotted
- Flat Six-Lobe
- Pan Six-Lobe



## TRILOBULAR TAPTITE®-II ALTERNATIVE STEEL ZINC & WAXED

- 82° Flat Phillips
- 82° Flat Phillips Undercut
- 100° Flat Phillips
- Oval Phillips
- Oval Phillips Undercut
- Pan Phillips
- Pan Six-Lobe Plus **NEW**
- Serrated Hex Flange Screw **NEW**
- Serrated Pan Phillips
- Truss Phillips
- Hex Washer Phillips
- Flat Six-Lobe
- Flat Six-Lobe Undercut
- Pan Six-Lobe
- Truss Six-Lobe
- Pan Pozi
- Pan Slotted
- Hex Washer Slotted
- Serrated Hex Washer Slotted
- Hex Washer Unslotted
- Serrated Hex Washer Unslotted
- Hex Unslotted



## SEMS TRILOBULAR TAPTITE®-II ALTERNATIVE STEEL ZINC & WAXED

- External Tooth (Pan Phillips)
- Internal Tooth (Pan Phillips)

## METRIC SIZES (CONT.)



### TRILOBULAR PLASTITE® 48-2 ALTERNATIVE STEEL BLACK OXIDE & WAXED

- Flat Phillips
- Flat Phillips Undercut
- Pan Phillips
- Hex Washer Unslotted
- Flat Six-Lobe
- Flat Undercut Six-Lobe
- Pan Six-Lobe



### TRILOBULAR PLASTITE® 48-2 ALTERNATIVE 18-8 STAINLESS STEEL **NEW**

- Flat Six-Lobe w/ Black Oxide Finish



### STEEL BLACK ZINC & WAXED

- Pan Phillips Taptite®-II Alternative
- Pan Six-Lobe Taptite®-II Alternative
- Pan Phillips Plastite® Alternative
- Pan Six-Lobe Plastite® Alternative



### STEEL YELLOW ZINC & WAXED

- Hex Washer Slotted Taptite®-II Alternative
- Hex Washer Slotted Taptite®-II Alternative (RoHS)
- Hex Washer Unslotted Taptite®-II Alternative (RoHS)



### STEEL GREEN ZINC & WAXED

- Hex Washer Combo Taptite®-II Alternative
- Hex Washer Slotted
- Hex Washer Unslotted

## METRIC SIZES



### EJOT® TYPE-PT® ALTERNATIVES THREAD-FORMING SCREWS (A2 STAINLESS)

- Flat Phillips
- Pan Phillips
- Flat Six-Lobe
- Pan Six-Lobe
- Round Washer Six-Lobe



### EJOT® TYPE-PT® ALTERNATIVES THREAD-FORMING SCREWS (STEEL ZINC)

- Flat Phillips
- Pan Phillips
- Flat Six-Lobe
- Pan Six-Lobe
- Round Washer Six-Lobe



### PLASTITE® / PLAS-FIX® 45 ALTERNATIVES STEEL ROHS ZINC

- Flat Phillips
- Pan Phillips
- Flat Six-Lobe
- Pan Six-Lobe
- Round Washer Six-Lobe



### PLASTITE® / PLAS-FIX® 45 A2 STAINLESS STEEL **NEW**

- Pan Six-Lobe
- Pan Pozi



### TRILOBULAR THREAD-ROLLING SCREWS TO DIN 7500

18-8 STAINLESS, PASSIVATED & WAXED

- DIN 7500-M Flat Six-Lobe
- DIN 7500-CE Pan Six-Lobe
- DIN 7500-M Flat Type-Z
- DIN 7500-C Pan Type-Z
- DIN 7500-D Hex Washer Unslotted



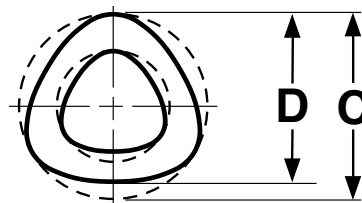
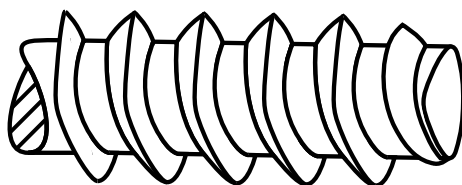
### TRILOBULAR THREAD-ROLLING SCREWS TO DIN 7500

STEEL ZINC & WAXED

- DIN 7500-D Hex Washer Unslotted (Zinc)
- DIN 7500-C Pan Type-Z (Zinc)
- DIN 7500-C Pan Type-Z (Zinc Black)
- DIN 7500-C Pan Type-Z (Zinc Yellow)
- DIN 7500-CE Pan Six-Lobe (Zinc)
- DIN 7500-ME Six-Lobe Flat **NEW**

# THREAD ROLLING

Plastite® 48-2



## PLASTITE® 48-2 THREAD ROLLING SCREWS

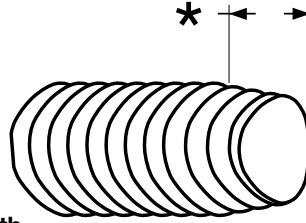
REMINC®

Nominal Screw Size and Threads Per Inch	C		D		Minimum Out-Of-Round	Recommended Pilot Hole Sizes	
	Diameter of Circumscribing Circle		Measurements Across Center			Soft Ductile Materials	Brittle Materials
	Max	Min	Max	Min			
• 0 - 40	.0665	.0635	.0635	.0605	.002	.0498	.0490
2 - 28	.092	.086	.089	.083	.002	.076	.080
3 - 24	.110	.104	.106	.100	.002	.088	.094
4 - 20	.127	.121	.123	.117	.002	.100	.106
• 5 - 20	.136	.132	.133	.129	.002	-	-
6 - 19	.147	.141	.143	.137	.003	.122	.128
7 - 18	.166	.160	.160	.154	.004	.134	.142
8 - 16	.185	.179	.179	.173	.004	.149	.158
9 - 15	.199	.193	.193	.187	.004	.162	.172
10 - 14	.212	.206	.208	.202	.004	.175	.185
12 - 11	.232	.226	.226	.220	.005	.195	.205
1/4 - 10	.276	.270	.268	.262	.006	.224	.240
5/16 - 9	.345	.335	.335	.325	.006	.286	.303
Tolerance on Length		Thru 3/4": ±.030"		Over 3/4": ±.050"		Over 1/4" Diameter, All Lengths: ±.050"	

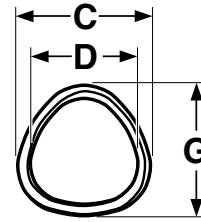
\* Specifications for the 0-40 & 5-20 diameters are independent from the REMINC standard and are listed here for reference purposes only.

Description	Trilobular thread-rolling screw with extra wide spacing between 48° profile threads; twin lead threads with a 1-2 thread point taper.	
Applications/ Advantages	Thermoplastics, engineering resins and certain thermosets. Sharper thread profile increases holding strength while reducing material displacement. Drive and strip torques are higher, reducing the need for inserts or reinforcing clips.	
Material	Steel	Stainless
	AISI 1022 steel	<b>18-8:</b> 18-8 stainless steel <b>410:</b> 410 austenitic stainless steel
Heat Treatment	Screws shall be quenched in liquid and then tempered by reheating to 650°F minimum.	<b>410 SS:</b> An ideal method of hardening 410 stainless screws is a bright hardening process, which typically involves a vacuum furnace. Another key factor affecting hardness is the chemistry of the fastener--most elements have maximum values but not minimums. This fact can contribute to hardness variance.  18-8 is only hardenable by cold-working.
Case Hardness	Rockwell C45 minimum	-
Case Depth	<b>No. 2 thru 6 diameters:</b> .002 - .007 <b>No. 8 thru 10 diameters:</b> .004 - .009 <b>1/4" diameter:</b> .005 - .011	-
Core Hardness	Core: Rockwell C28-38 (after tempering)	<b>18-8:</b> Rockwell B90 - C20 (approx.) <b>410:</b> Rockwell C38 - 46 (approx.)
Plating	Various finishes with wax coating (see Appendix-A)	Stainless thread rolling screws are supplied passivated & waxed.

\*Plastite® is a registered trademark of REMINC. Kanebridge's screws are not authorized or made by licensed REMINC manufacturers.



\*2-3 Pitch Lead Length



## TAPTITE® II THREAD ROLLING SCREWS

REMINC

Nominal Screw Width	C		D		G
	Screw Body Dimensions				Point
	Diameter of Circumscribing Circle		Measurement Across Center		Diameter of Circumscribing Circle
	Max	Min	Max	Min	Max
2-56	.0875	.0835	.0840	.0800	.070
3-48	.1010	.0970	.0970	.0930	.081
4-40	.1145	.1105	.1095	.1055	.090
5-40	.1275	.1235	.1225	.1185	.103
6-32	.1410	.1350	.1350	.1290	.111
8-32	.1670	.1610	.1610	.1550	.137
10-24	.1940	.1880	.1860	.1800	.153
10-32	.1930	.1870	.1870	.1810	.163
12-24	.2200	.2140	.2120	.2060	.179
1/4-20	.2550	.2490	.2450	.2390	.206
5/16-18	.3180	.3120	.307	.301	.264
3/8-16	.3810	.3750	.3685	.3625	.320
1/2-13	.5075	.5015	.4920	.4860	.432
Tolerance on Length		Nominal Screw Size	Nominal Screw Length		
			To 3/4" Incl.	Over 3/4" to 1.5" Incl.	Over 1.5"
		All Diameters	-0.03	-0.05	-0.06

Description	Trilobular thread rolling screw. As each lobe of the screw moves through the pilot hole in the nut material, it forms and work-hardens the nut thread metal, producing an uninterrupted grain flow.	
Applications/Advantages	For drilled, punched or corrod holes in all ductile metals and punch extruded metals. Eliminates chips, requires low drive torque and provides excellent resistance to vibrational loosening.	
Material	Steel	Stainless
	Steel thread rolling screws shall be made from cold-heading steel conforming to the following chemical composition: <b>Carbon:</b> 0.13-0.27%; <b>Manganese:</b> 0.64-1.71%	<b>18-8:</b> 18-8 stainless steel <b>410:</b> 410 austenitic stainless steel
Heat Treatment	Screws shall be quenched in liquid and then tempered by reheating to 650°F minimum.	<b>410 SS:</b> An ideal method of hardening 410 stainless screws is a bright hardening process, which typically involves a vacuum furnace. Another key factor affecting hardness is the chemistry of the fastener--most elements have maximum values but not minimums. This fact can contribute to hardness variance.  18-8 is only hardenable by cold-working.
Case Hardness	Rockwell C45 minimum	-
Case Depth	<b>2-56 through 6-32 diameters:</b> .002 - .007 <b>8-32 through 12-24 diameters:</b> .004 - .009 <b>1/4-20 diameter &amp; larger:</b> .005 - .011	-
Hardness	Core: Rockwell C28-38	<b>18-8:</b> Rockwell B90 - C20 (approx.) <b>410:</b> Rockwell C38 - 46 (approx.)
Plating	See Appendix-A for information on the plating of Taptite® II screws.	Stainless thread rolling screws are supplied passivated and waxed.



# KANEBRIDGE MAKES IT EASY TO IDENTIFY WHAT PARTS ARE MANUFACTURED IN THE U.S.A. OR ELSEWHERE



## HEX WASHER SLOTTED

THREAD ROLLING SCREWS

GENERIC ALTERNATIVES TO PLASTITE® 48-2\*

TRILOBULAR DESIGN

Material: Steel Zinc & Waxed

Governing Standard: Heads to ASME B18.6.3 dimensions

Measurable: Case Hardened to Rockwell C45 min.

Measurable: Core Hardness: Rockwell C28-38

Thread Pattern: 48° Thread Profile & 2 Lead Threads

*\*Plastite® is a registered trademark of REMINC. Our screws are not authorized or made by licensed REMINC manufacturers.*

ITEM #	ITEM SIZE	ORIGIN	CARTON QTY	UM	LBS/UM
0404LSW	4-20X1/4	U.S.A.	10.000	M	0.93
0406LSW	4-20X3/8	Import	10.000	M	1.20
0408LSW	4-20X1/2	Import	10.000	M	1.50
0606LSW	6-19X3/8	U.S.A.	10.000	M	2.30
0608LSW	6-19X1/2	Import	10.000	M	2.81
0806LSW	8-16X3/8	Import	10.000	M	3.20
0808LSW	8-16X1/2	Import	10.000	M	3.94
1008LSW	10-14X1/2	Import	6.000	M	6.06
1216LSW	12-11X1	Import	3.000	M	10.50
1412LSW	1/4-10X3/4	Import	2.500	M	14.62

### Item detail for:

Slotted Ind Hex Washer Plastite Alternative 48-2 Fully Threaded Zinc Bake & Wax

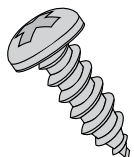
Item #: 0606LSW | Size: 6-19X3/8

**Origin: U.S.A.**

CARTON QTY	UM	REGULAR PRICE/UM 1 TO 4 CTNS	DISCOUNTED PRICE/UM 5 OR MORE CTNS	WEIGHT / UM
10.000	M	\$33.63	\$33.63	2.3lbs

How many full cartons do you wish to check stock?

# THE KANEBRIDGE ADVANTAGE



## Over 43,000 Items

Kanebridge is a master distributor with over 43,000 items in inventory, including over 12,000 Stainless Steel and over 2,000 Military fasteners.



## Traceability

Lot control is maintained on all items in our inventory.



## Same-Day Shipping

Online orders placed by 5PM ship the same day via UPS. Online orders placed by 4PM ship same-day via FedEx. Same-Day Shipping guarantees can be impacted by carrier schedules, weather, and order volume. In all conditions our record for same-day shipping remains exceptionally high. Check our website for the latest updates on this policy.



## Free Certifications

Chemical & Physical certifications are available on all Thru-Hardened parts and all items made to Military Specifications. We also keep all certifications on file and properly archived. Access any certification anytime you need it at no charge.



## Fastener Specifications Guide

Kanebridge's newest 6th edition of its Fastener Specification Guide is available from stock from both of our branches. This hard cover reference volume is the most comprehensive and up-to-date collection of fastener specifications Kanebridge has ever offered. The Specification Guide can also be accessed online at [www.kanebridge.com](http://www.kanebridge.com).



## No-Fault Return Policy

We have a no fault 60 day return policy and accept returns of full carton quantities for any reason. Returns may not be accepted after 60 days. Restock charge may apply after 30 days. Non-cancel/non-return orders are exempt from this policy. Returns should be in their original boxes and must not be mingled. **Thru-Hardened or Military-Grade fasteners will not be accepted unless returned in their original box(es).**



## 99% Service Level

99% of the items listed in this catalog are available from stock every day from one of our warehouses located in California or Illinois.



## Custom Labeling

Streamline your receiving operations by letting Kanebridge affix custom labels to each box in your order. Include any information you need; Part Number, Part Description, Lot Number and Country of Origin in alphanumeric and/or bar code formats.



## Drop-Shipping

Kanebridge can ship orders directly to your customer with a packing list and shipping label that show you as the vendor. Combine with our Custom Label service for a simplified method of shipment.



## Contact Us

T: (800) 222-9221 [sales@kanebridge.com](mailto:sales@kanebridge.com)  
F: (201) 337-2301 [www.kanebridge.com](http://www.kanebridge.com)



T: (800) 222-9221    [sales@kanebridge.com](mailto:sales@kanebridge.com)  
F: (201) 337-2301    [www.kanebridge.com](http://www.kanebridge.com)